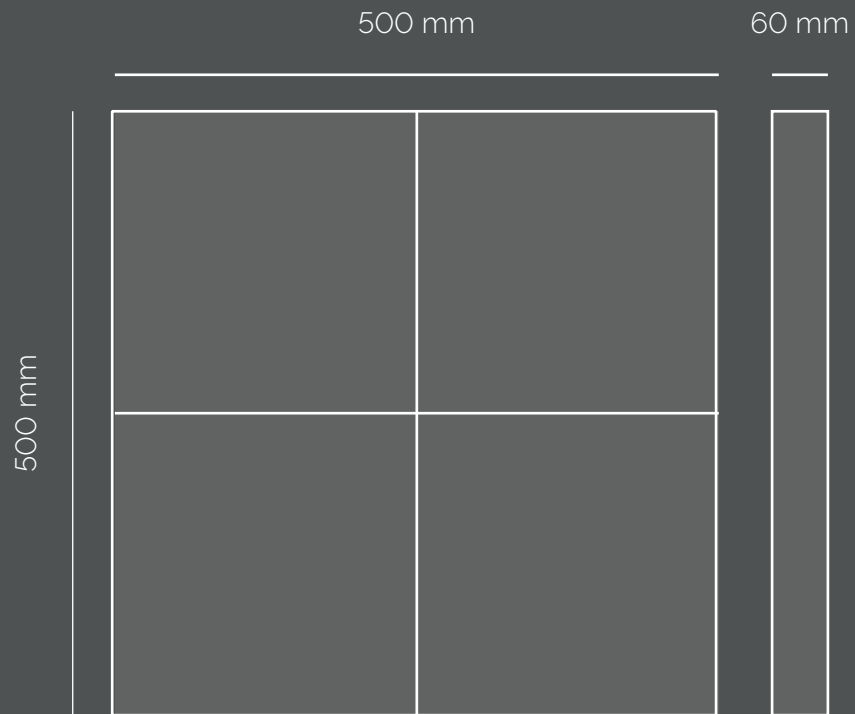




**AURA**

Dimensions	1
Drawing	2
Build Option	3
Build Option Cornered	4
Build Option Curved	6
Controller & Converter	7
Product Line	8
Cabinet Corner	9
Maintenance	10
Maintenance Case	11
Add-on	12
Mini LED in Package	13
Specifications	14



Each cabinet is **500 x 500 mm** and **60 mm** deep.  
It is compatible with stacking for fairs.

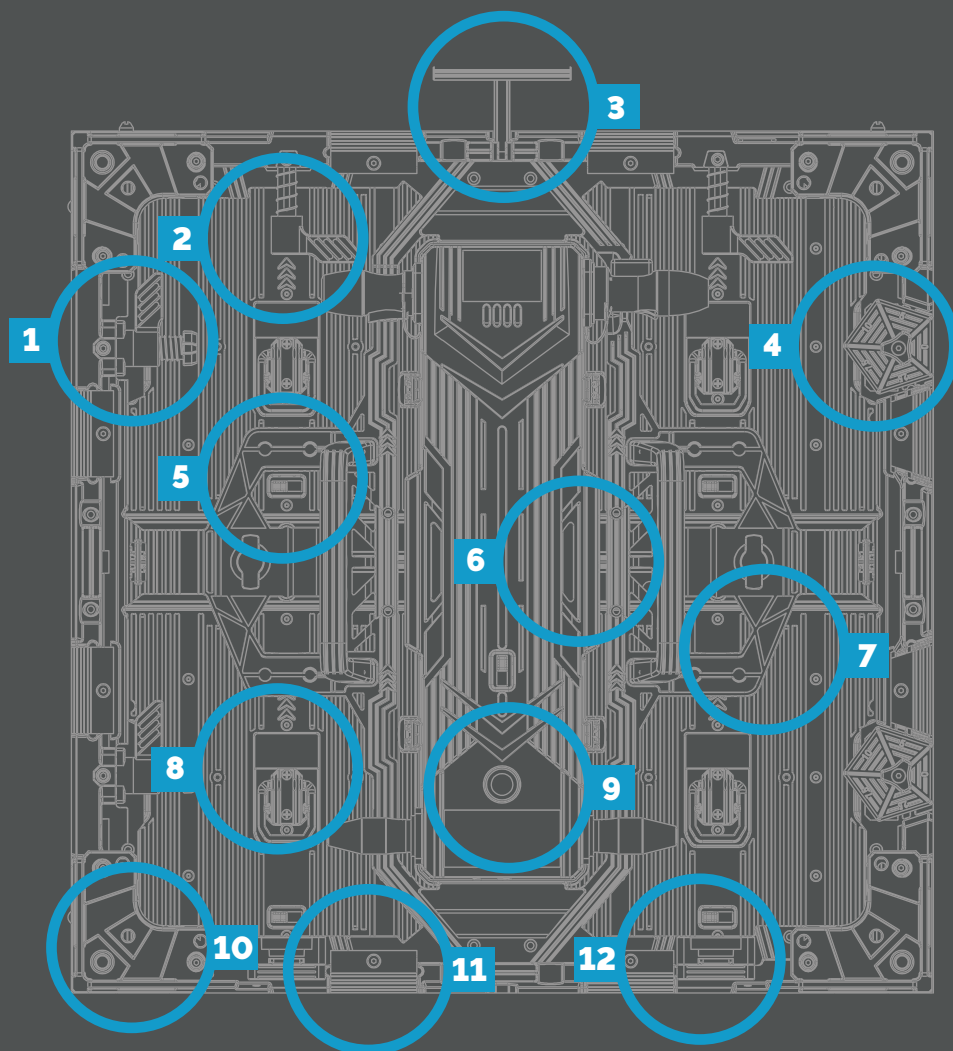
Four easily replaceable modules make up one cabinet. These are attached magnetically to the frame. Further details can be found on the drawing on the next page.



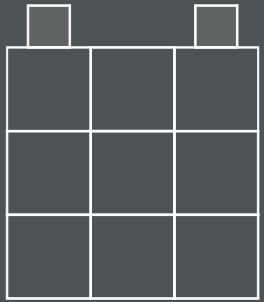
8,9 kg/cabinet; 35,6 kg/m<sup>2</sup>



160° horizontal; 160° vertical

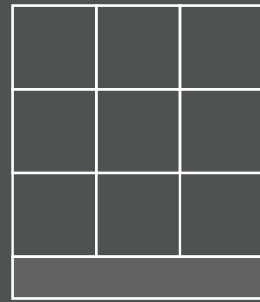


- 1 Side Lock
- 2 Top Lock
- 3 Upper Handle
- 4 Curving Lock
- 5 Toggle to mark defective modules
- 6 Status Lamp
- 7 Side Handle
- 8 Module Handle
- 9 Test Button
- 10 500 Corner
- 11 Adapter fair stacking system
- 12 Locking Status



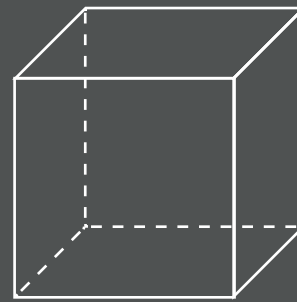
## HANGING

Max. amount height TBD  
max. amount width TBD



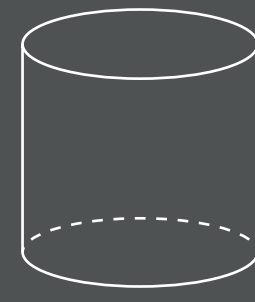
## STACKING

Max. amount height TBD  
max. amount width TBD



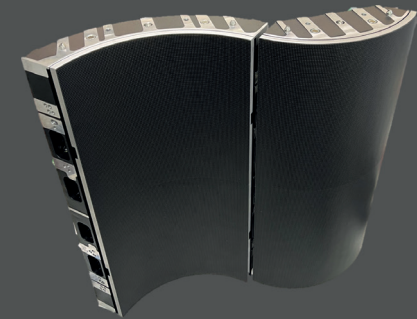
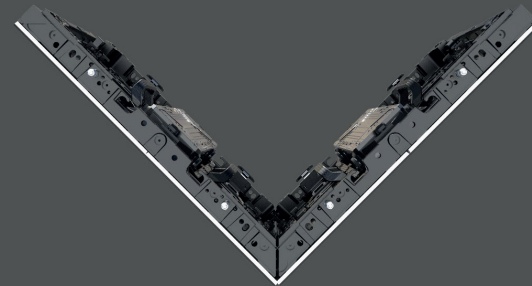
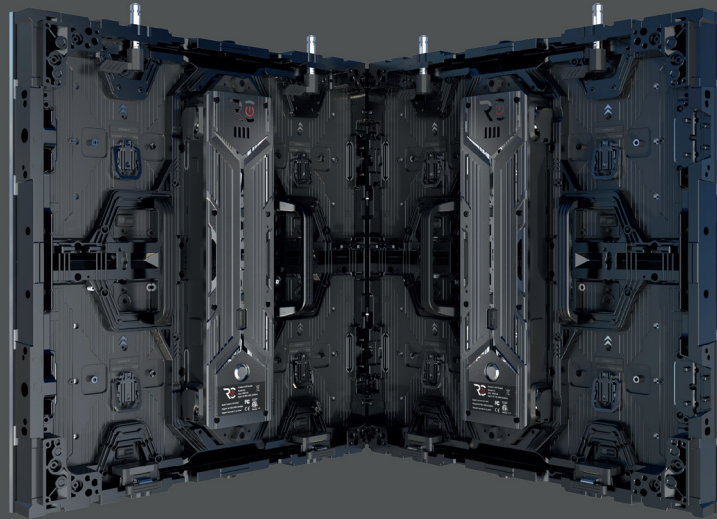
## VARYING SHAPES

with 45° and 90° corner  
cabinets



## CURVED

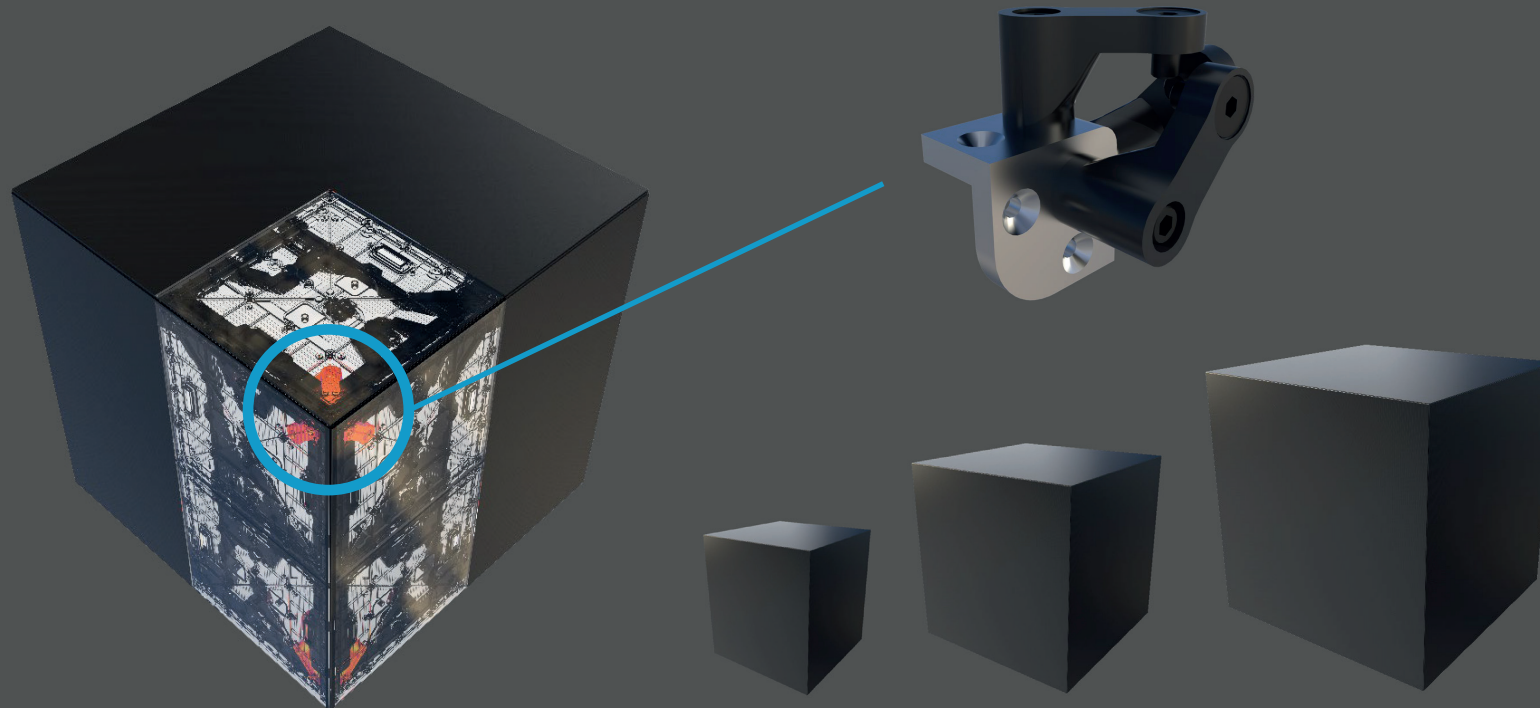
up to 30° concave/convex  
in 1° steps



## **YOU CAN MAKE ALL KINDS OF SHAPES AND FORMS WITH AURA!**

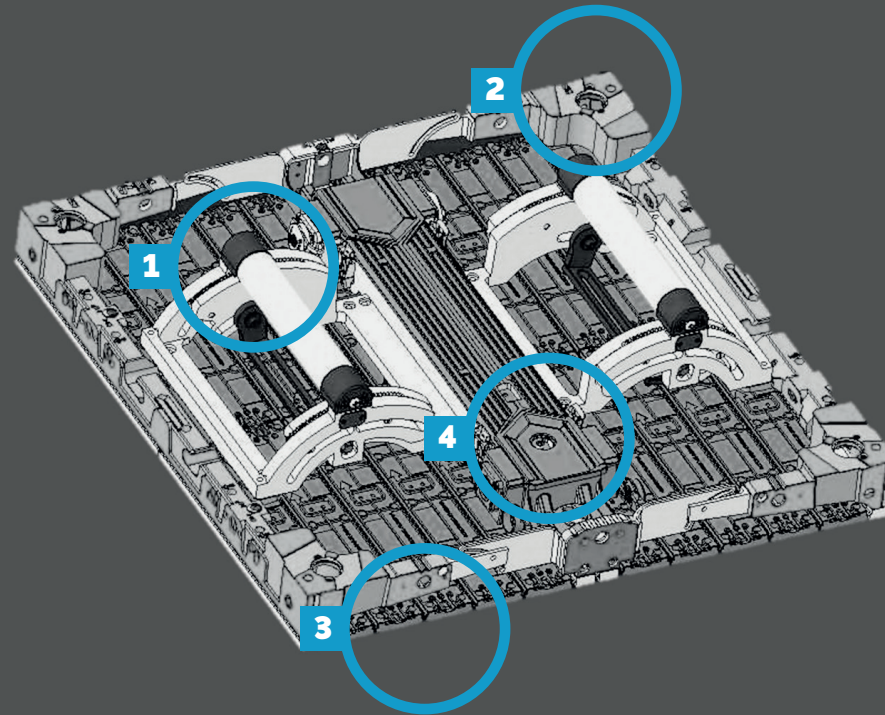
AURA 45° cabinets can be combined with 90° cabinets or curved material to make your visions come to life. With the use of corner fillers you can turn your 45° cabinets into 90° cabinets making them extremely versatile.

90° concave and convex cabinets make perfect 90° corners possible in your LED walls



**CUBE CONNECTOR**

Thanks to specifically designed cube connectors you can create 90° cubes with AURA.



## AURA CURVED REAR VIEW

- 1 Curving Handles
- 2 500 Corner
- 3 3 Pins for z-axis alignment
- 4 Test Button

NOVASTAR	CX40-Pro	MX2000 Pro	MX6000 Pro
<b>INPUT</b>	HDMI 2.0-1/2, DP 1.2, 12G-SDI In	HDMI 2.0/2.1, DP 1.2/1.4, 12G-SDI, SMPTE ST 2210	HDMI 2.0/2.1, DP 1.2/1.4, 12G-SDI, SMPTE ST 2210
<b>SUPPORTED RESOLUTION</b>	4096x2160 @60Hz (max)	4096x2160 @60 Hz or 8192x1080 @60Hz (Forced)	4096x2160 @60Hz or 8192x1080 @60Hz (Forced)



## LED CONTROLLER

Due to its new Novastar **5G** XA50 Pro Receiving Card AURA is capable of delivering images at **16 bit depth** and grey scale along with a refresh rate of **7860 Hz**. This greatly improves the amount of cables needed.

Fibre converters are a cost-effective way of conversion between optical and electrical signals for video sources to connect the sending card to the LED display. It is easy to install on-site and offers stable long-distance transmission. The Fibre Converter **CVT8-5G** is a must-have when working with the MX2000 Pro or MX6000 Pro.



## AURA

standard cabinet	500 x 500mm
corner cabinet 45° left/right	500 x 500mm
corner cabinet 90° concave/convex	
cube cabinet	500 x 500mm
curved cabinet	500 x 500mm

## HANGING & STACKING SYSTEM

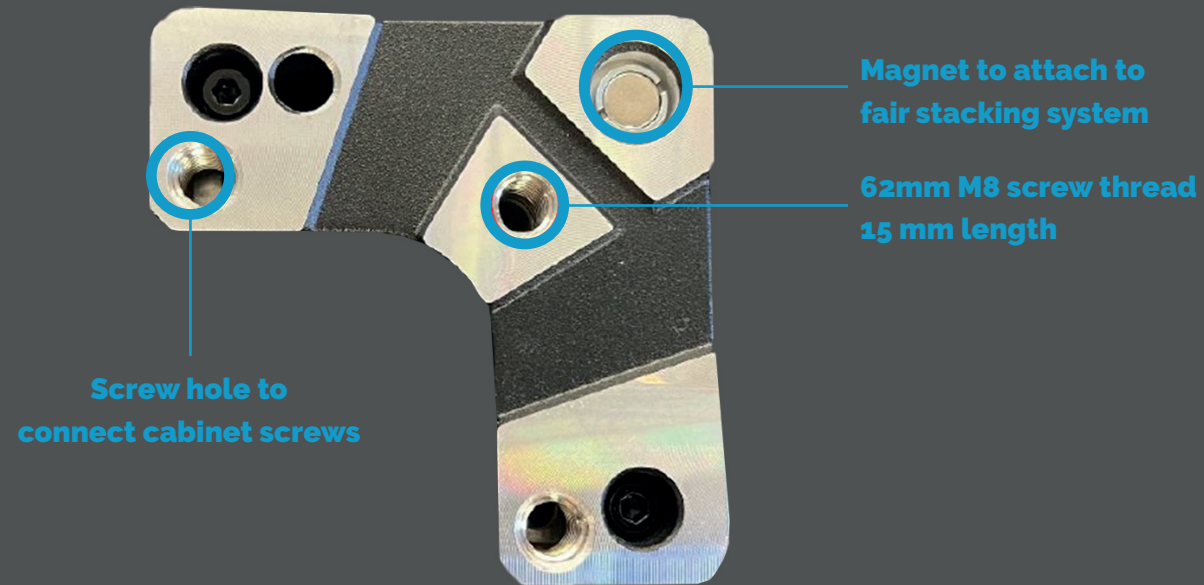
basement/truss  
AURA sledge to adapt to your preexisting system  
AURA stacking clamp

## CASE

with inlays for eight AURA cabinets individual inlays for standard-issue cable cases

## ACCESSORIES

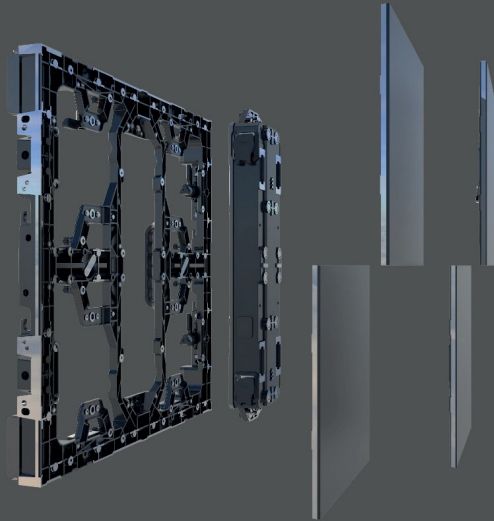
shims to adjust thickness for different frames  
cube connector  
corner filler



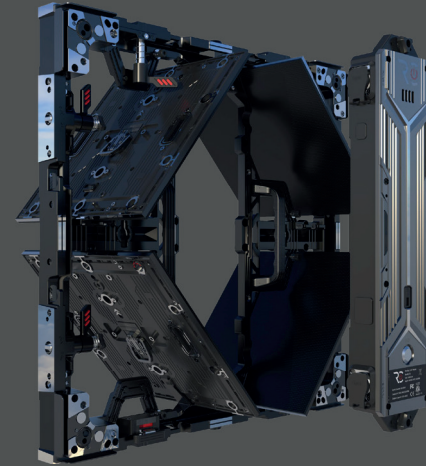
## CABINET CORNER

AURA comes with M8 screw holes and magnets to connect with varying frame and stacking systems

## FRONT MAINTENANCE



## BACK MAINTENANCE



## MAINTENANCE

Front- and back maintenance is possible with AURA cabinets. Due to its matte finish which offers deep black values with a low reflection, it is best to handle the cabinets with gloves to avoid fingerprints. These can easily be wiped away with a little bit of water and a microfibre cloth. Erasers and dish soap can be used for tough stains. Do not use alcohol or anything with additives!



We offer two cases for easy on-the-go maintenance. A version that is designed to work perfectly with a Full HD wall and a 4K wall respectively. They consist of:

- 10 x modules (Full HD); 20 x modules (4K)
- 3 x power box (Full HD); 5 x power box (4K)
- 3 x powercon cable (Full HD); 5 x powercon cable (4K)
- 1 x removal tool
- 1 x z-axis tool
- 1 x gloves
- 1 x laptop

- 1 x spray bottle for distilled water
- 1 x microfibre cloth
- 1 x eraser
- 1 x dish soap



#### **ADDITIONAL LANG BENEFITS**

Especially when it comes to installations in high-risk spaces (i.e. airports) fire safety is key. We offer to upgrade your LED cabinets with the latest Media Fire Protect technology done in-house.

We add a mini-fire-extinguisher into the power box to swiftly detect and extinguish fire and smoke.



- **Dustproof**
- **Anti-UV**
- **High/Low temperature**
- **Eye safety**
- **(Sea-) water resistant**
- **Humidity proof**
- **Anti-static**
- **Robust**
- **Shockproof**

## **WHY WE CHOSE MIP TECHNOLOGY FOR AURA**

AURA makes bright images up to 1500 nits possible using flip chip mounting techniques and a common cathode configuration.

Simultaneously offering high black and grey scale uniformity.

The flexibility of the MiniLED material makes curved cabinets at a variance of angles possible. The LEDs are protected with a water and shock-resistant glue coating that makes the cabinets highly versatile and durable.

In the rare case of a damaged pixel, this can be repaired in-house at LANG AG.



<b>Model designation</b>	AURA
<b>Pixel pitch</b>	1,56 mm
<b>Brightness</b>	1,500 nit, HDR
<b>Application area</b>	Indoo/Outdoorr
<b>Pixel density</b>	320 x 320 px/Cabinet; 410.914 px/m <sup>2</sup>
<b>LED-type</b>	MIP (MiniLED in Package), CCT (Common Cathode Technology), GOB (Glue on Board), Flip Chip
<b>Lifespan LED</b>	100,000 hours
<b>Viewing angle</b>	160° horizontal; 160° vertical
<b>Processing</b>	Novastar, XA50 Pro (5G) Receiving Card
<b>Bit depth</b>	16 bit
<b>Refresh Rate</b>	7,680 Hz
<b>Scan Rate</b>	1/16
<b>Power consumption</b>	Maximum: 112,5 W/Cabinet; 450 W/m <sup>2</sup> Average: 37,5 W/Cabinet; 150 W/m <sup>2</sup>
<b>Input voltage</b>	100 - 240 V / 50 - 60 Hz
<b>Operating temperature</b>	0 to +45 °C
<b>Humidity operating</b>	10 to 90%
<b>Cabinet dimensions</b>	500 x 500 x 60 mm (W x H x D); (= 0,25 m <sup>2</sup> )
<b>Weight</b>	8,9 kg/Cabinet; 35,6 kg/m <sup>2</sup>
<b>Maintenance</b>	Front/Back Service
<b>Curving</b>	0°; 2,5°; 5,0°; 7,5°; 10,0° (max) Concave
<b>Protection</b>	IP43 (front) / IP30 (back)
<b>Certification</b>	CE, RoHS, EMC class B, TÜV